

Step 1. Check and charge the batteries

1. Tap the battery power button to view the charge level as shown by the LED lights. Battery pack is 100% charged when all 5 LEDs light.

Battery pack is 100% charged when all 5 LEDs light.

2. Insert the charger power supply output plug into the socket on the charge adapter.

3. Insert the battery onto the charge adapter, fully engaging side latches with the adapter.

4. Plug the charger power supply AC cord into an AC outlet.



Note: Batteries ship from the factory in shipping mode. Batteries do not function normally in shipping mode. To see if a battery is in shipping mode, tap the power button. If the 2nd and 4th LEDs flash 3 times, the battery is in shipping mode.

User Action	LED	Mode
Tap Power Button	1 - 5 LEDs turn on, then off	Charge Level indication for 2 seconds.
Tap Power Button	2 nd & 4 th LEDs flash 3 times	In low-power shipping mode. Charge to exit.
Press & Hold for 4 seconds	Sequential turn-on	Toggles battery Power to on.
Release after 4-sec hold	Middle LED stays on	Battery Power is on.
Press & Hold for 4 seconds	Sequential turn-off	Toggles battery Power to off.
Automatic	All LEDs off	Battery Power is off.

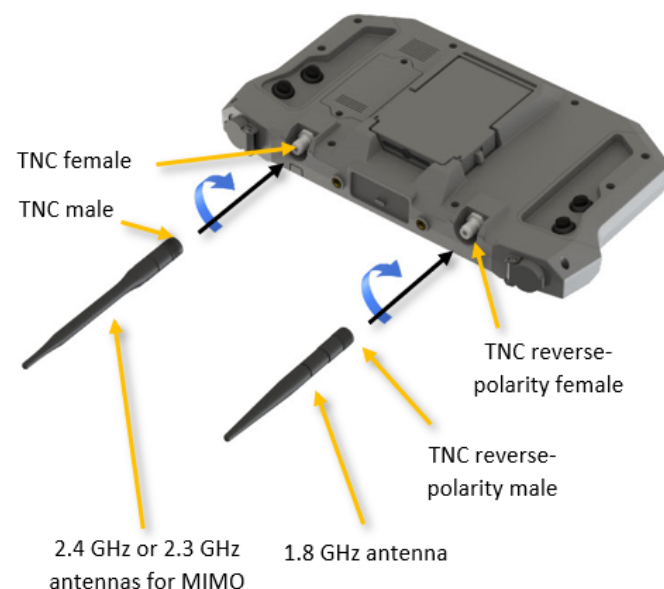
Step 3. Power up the TAC

1. Press and hold the TAC battery pack power button for 4 seconds. The 5 LEDs sequentially turn on. Release.
2. Verify that the battery's center LED stays lit. This indicates the battery power is on.
3. Press and hold the TAC tablet power button for 2 seconds. Release.
4. Tablet displays an animated Teal splash screen. This indicates successful system start-up. When prompted, swipe up to start the Teal QGC app.



Step 2. Prepare the Teal Air Control (TAC)

1. Securely screw the antennas clockwise onto the TNC connectors on the TAC.
2. Insert and securely latch a fully-charged battery into the TAC battery compartment.
3. Verify both battery side latches fully engage with the TAC housing to secure the battery.

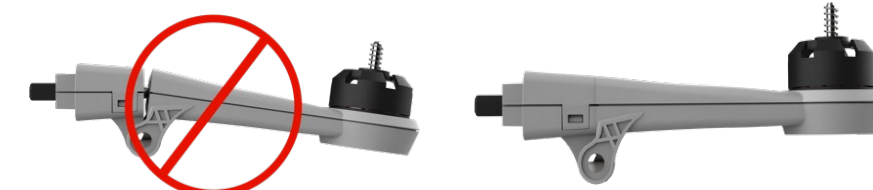


Step 4. Prepare the Teal 2

1. Unfold arms and securely lock into their fully-extended position.



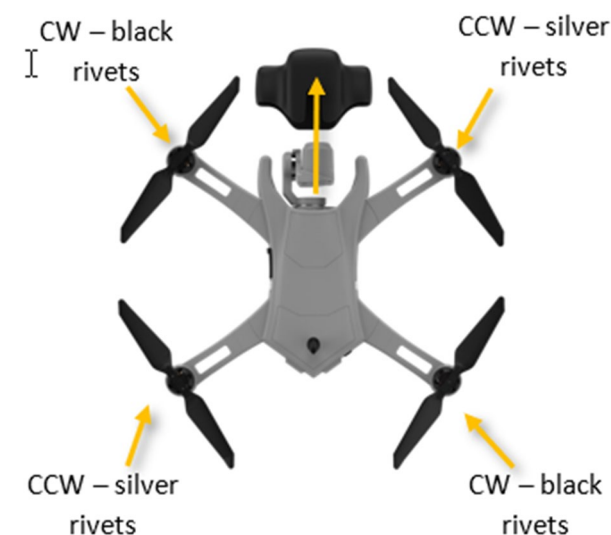
If the arm lock mechanism is worn and does not securely lock, replace the arm.



2. Securely lock propellers into the arm motors.



Check that propellers are not damaged. Replace if nicked, warped, or cracked.

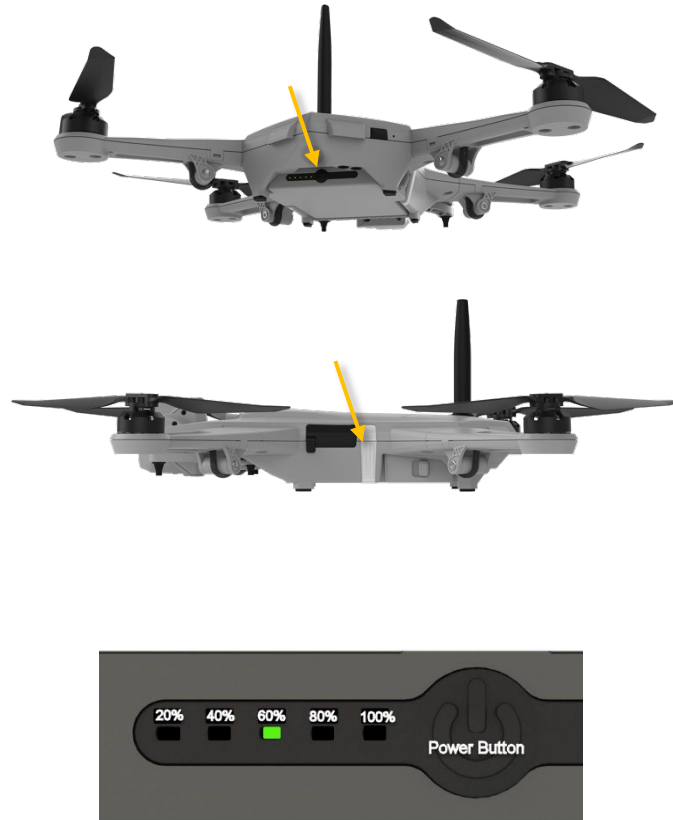


3. Remove the gimbal protective cover by pulling it straight forward away from the drone.

4. Insert and securely latch a fully charged battery into the drone battery compartment.

Step 5. Power up the Teal 2

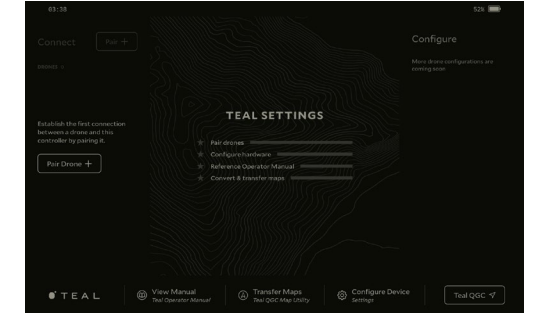
1. Press and hold the drone battery power button for 4 seconds. The 5 LEDs sequentially turn on. Release.
2. Verify the center LED is lit. This indicates battery power is on.
3. Listen for exhaust fan start-up. Verify illuminating side panel lights turn on. This indicates successful system start-up. Full start-up takes approximately 15 seconds.
4. Verify gimbal start-up. When the gimbal turns on, it moves to a centered, level, and forward-facing position.



Step 7. Connect the TAC with the Teal 2

Note: Most sUAS kits come already paired and only need to be reconnected. The system remembers the relationship and re-establishes link upon Teal QGC launch.

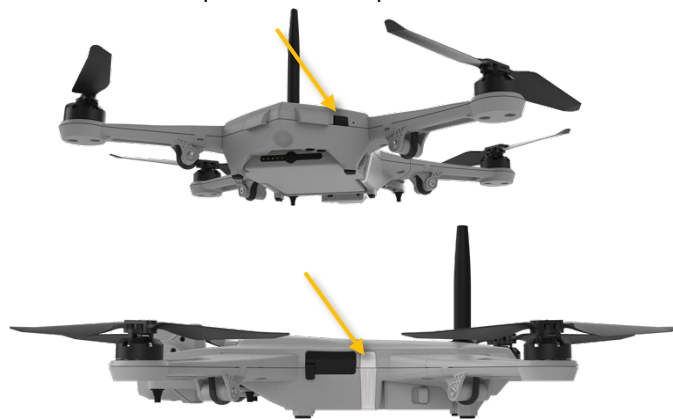
1. Stand at least 25 feet away from the drone. Transmission power can saturate the radio receivers at close range, causing temporary loss of link.
2. Open the Teal Settings application.
3. Click **Pair Drone +**.
4. Press and hold the pair button on the back of the vehicle for five seconds.
5. Select the vehicle to pair.
6. Click **Pair with this device**.
7. Confirm the settings. Confirm the network name, password, channel, and drone range. The recommended range is long.
8. Click **Confirm and start pairing**.
9. When pairing is done, click **Finish**.
10. Click Teal QGC in the bottom right corner to return to the Fly View.



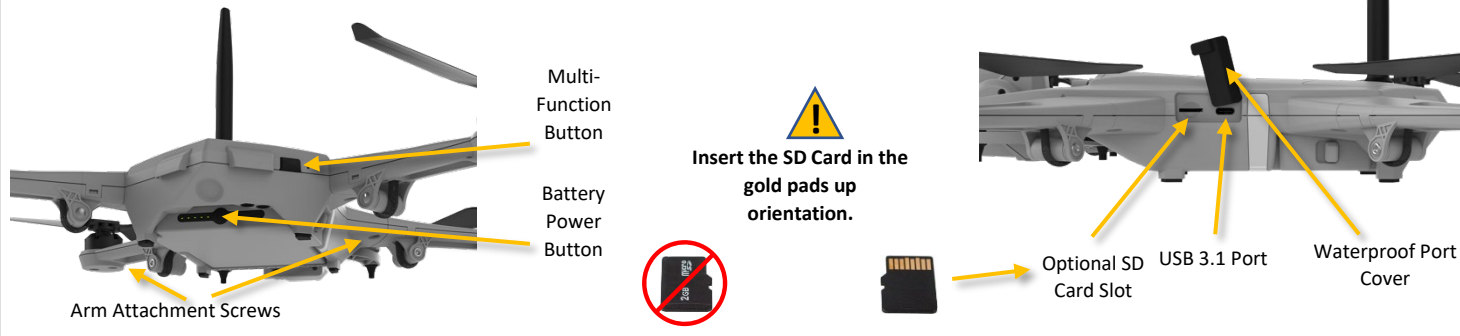
Step 6. Teal 2 pairing

This step is only necessary if the drone did not come already paired with its TAC. This step is useful for replacement or additional drone purchase. In Step 7, select **Pair** instead of **Connect**.

1. Press and hold the black Multi-Function Button for 5 seconds. Release.
 - ⚠ Pressing this button removes any previous connector and pairing to a TAC.
2. Verify the illuminating side panel lights begin flashing. This indicates the Teal 2 pairing preparation is in progress.
3. Wait for the illuminating side panel lights to stop flashing. This indicates it is ready to pair.

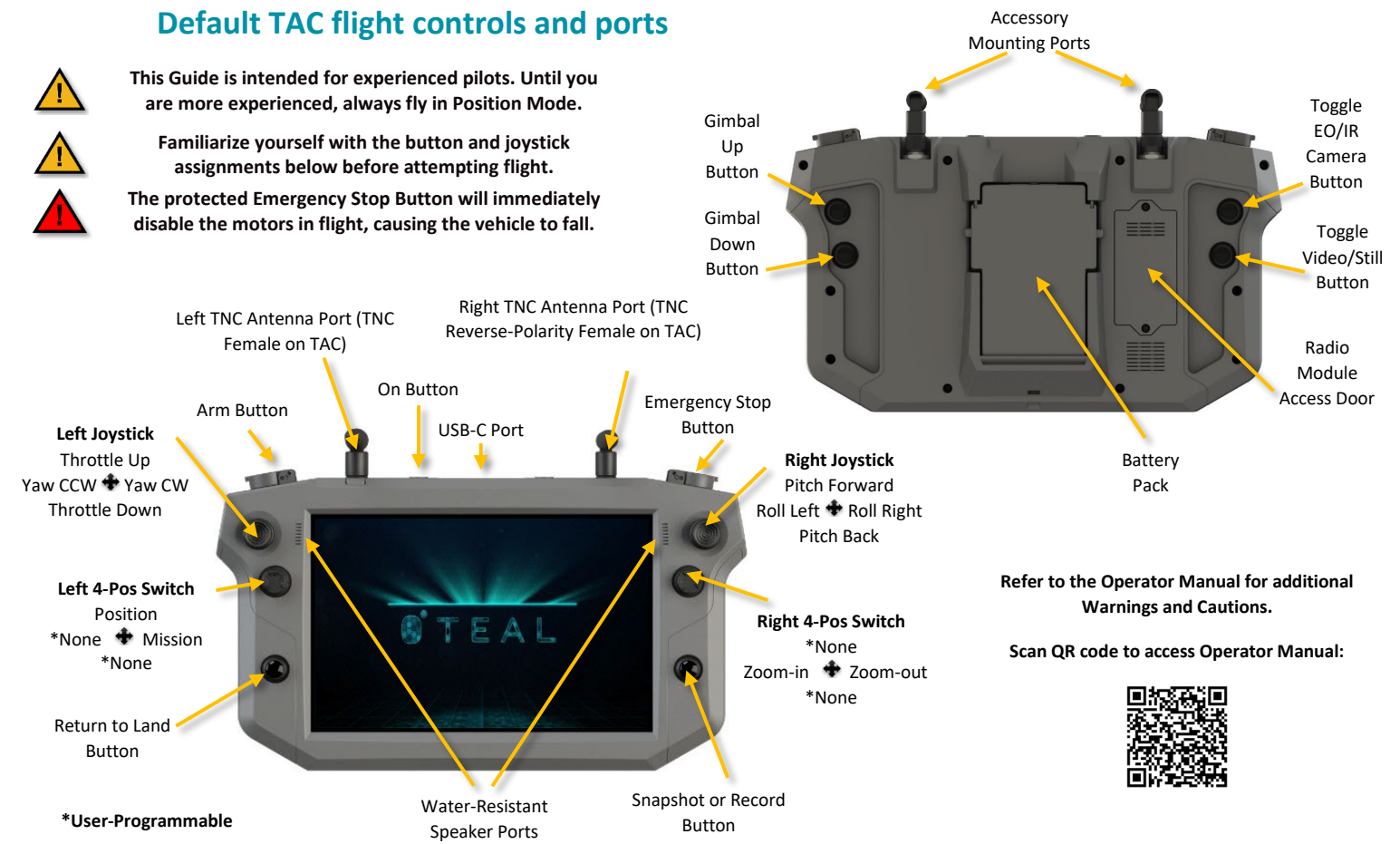


Teal 2 Controls & Ports



Default TAC flight controls and ports

- ⚠ This Guide is intended for experienced pilots. Until you are more experienced, always fly in Position Mode.
- ⚠ Familiarize yourself with the button and joystick assignments below before attempting flight.
- ⚠ The protected Emergency Stop Button will immediately disable the motors in flight, causing the vehicle to fall.



Refer to the Operator Manual for additional Warnings and Cautions.

Scan QR code to access Operator Manual:

