



# SKY-WATCH

THROW & COLLECT

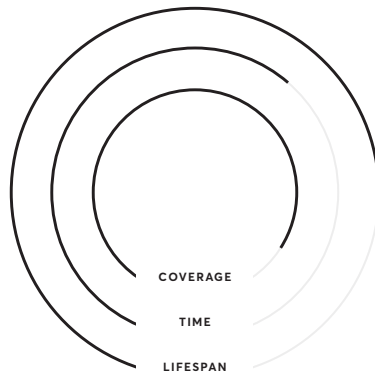
## HEIDRUN MAPPING

Image intelligence is a game changer for planning military operations when it comes to minimizing casualties and always have updated maps available.

The Heidrun Mapping is a fully autonomous, light-weight mini drone built for high-precision mapping providing precise updated 2D overview maps and 3D models for operational mission planning and execution. Actionable intel in just 3 hours.

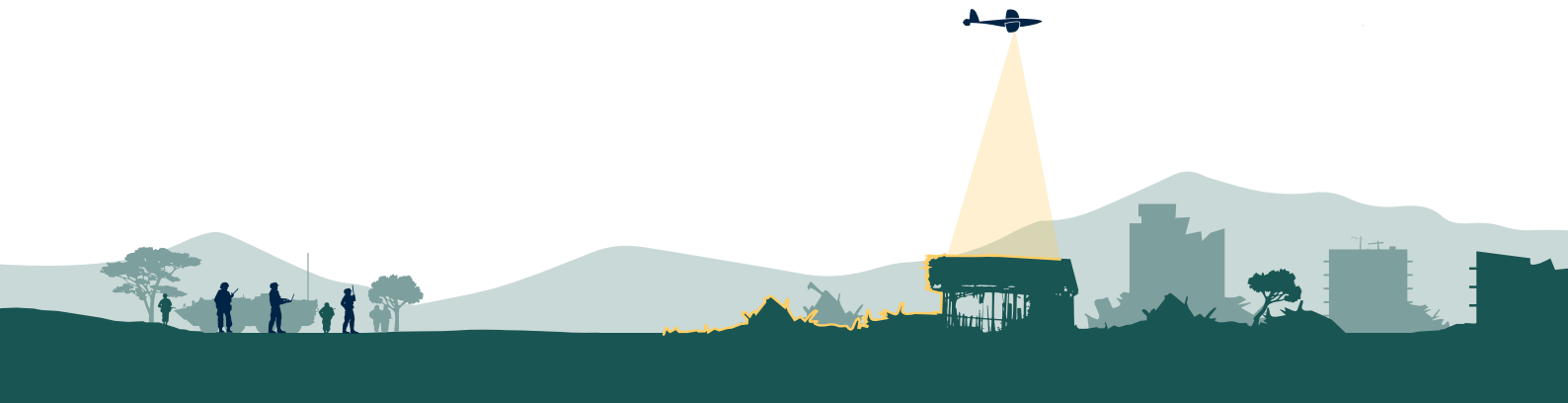
**RESOLUTION**  
2.5 CM/PX

**FLIGHT TIME**  
150 MIN



**DEPLOYMENT TIME**  
5 MIN

**OPERATIONAL WEIGHT**  
2.3 KG



BASED ON A THROW AND COLLECT TECHNIQUE, THE HEIDRUN IS EXTREMELY USER-FRIENDLY. IT IS LAUNCHED RAPIDLY BY HAND WITHOUT ANY ASSISTING TECHNOLOGY AND RETURNS AUTOMATICALLY FOR A DEEP STALL LANDING WHEN THE MISSION IS ACCOMPLISHED.





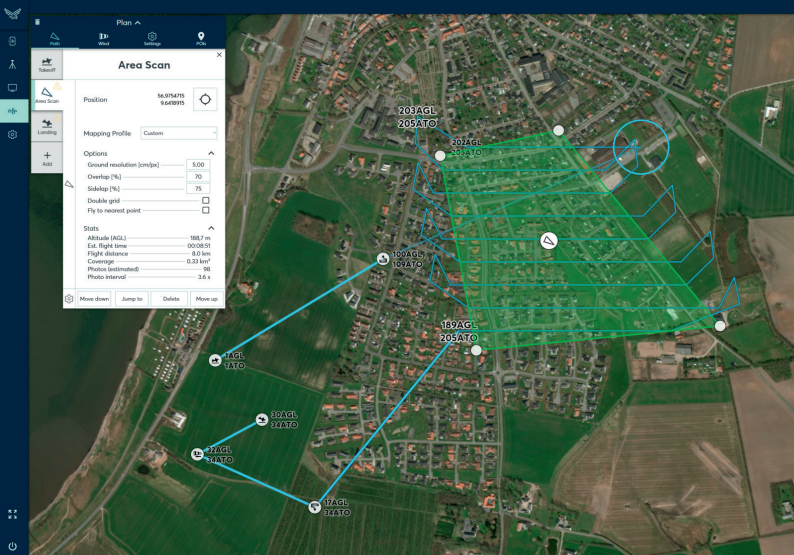
## LIGHTWEIGHT & LONG ENDURANCE

The Heidrun Mapping is man-portable, and its low weight makes it ideal for operations in remote and impassable terrain. The drone has an endurance of 2,5 hours of functional operating time, enabling the personnel to operate from safer distances without being spotted, covering large areas in a short time.

## OPERATIONAL MISSION PLANNING

The Heidrun Mapping solution is used to achieve precise and actual overview of environmental conditions, enemy position and activities. With updated maps troops are never taken by surprise when it comes to terrain, roadblocks, collapsed buildings, flooded areas or infrastructure state.

With the advanced data exploitation software high quality 2D and 3D models are created from collected images enabling surgical mission planning. Actionable intel in just 3 hours equals minimizing casualties.



## EASY TO USE

An intuitive user interface with pre-defined best practise missions, together with easy operation practice makes the Heidrun Mapping extremely user-friendly. In-flight changes to mission is uploaded by a single click.

The fully autonomous system basically runs itself when activated, ensuring that the operator can stay focused on the mission collecting data and make the best decisions for the success of the mission.

## SKY-WATCH

With its headquarters in Denmark, Sky-Watch has been developing, manufacturing and selling high-end UAV solutions worldwide since 2009.

Sky-Watch is one of the few companies in Europe with the know-how to develop all elements of a drone for professional use, including advanced embedded control software, user interfaces, electrical components, mechanical design and aerodynamics.

[www.SKY-WATCH.com](http://www.SKY-WATCH.com)

