

Overview

Southwest Antennas Part # 1009-035 is a 2X2 sector antenna for multi-port MIMO / MANET radio systems that covers the 2.2 - 2.5 GHz frequency band, with a minimum gain of 12 dBi. Two discrete antenna elements each with their own RF connector offer 45 degree slant left and 45 degree slant right polarization, providing for increased transmit and receive polarization diversity.

The included pipe mounting bracket allows the antenna to be connected to poles with an outside diameter of 1 - 2 inches, and the antenna to be tilted from horizontal down to -15 degrees.

Features

- 2 Input 2X2 Sector Antenna with 120° Azimuth Beamwidth
- Dual Polarized Design:
 - 1x 45° Slant Left
 - 1x 45° Slant Right
- 2.2 - 2.5 GHz
- 12 dBi Minimum Gain
- 50W Power Handling
- White UV Stable Kydex Radome
- 0 to -15° Adjustable Elevation Angle Downtilt
- Includes Pole Mounting Kit for 1" - 2" Pole Diameter
- 2x Type-N(f) RF Connectors

Applications:

- 2X2 MIMO / MANET Radio Networks
- Infrastructure Base Stations
- Planned City Wide / Urban Area Mesh Radio Networks
- Rapid Deploy Networks for Event Management and Security
- Point-to-Point Back Haul MIMO Radio Links
- Emergency Management & Public Safety

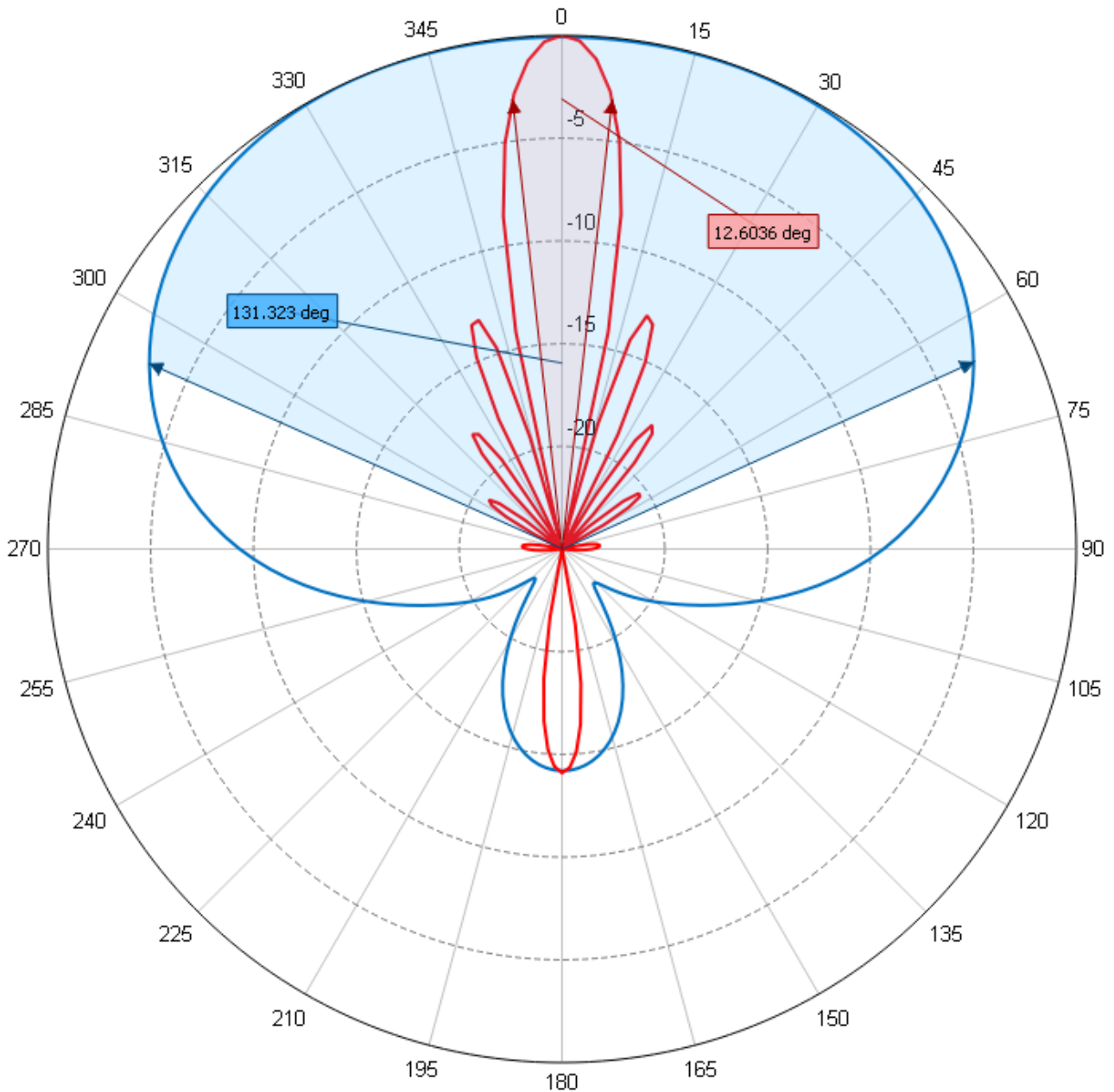


Product Specifications

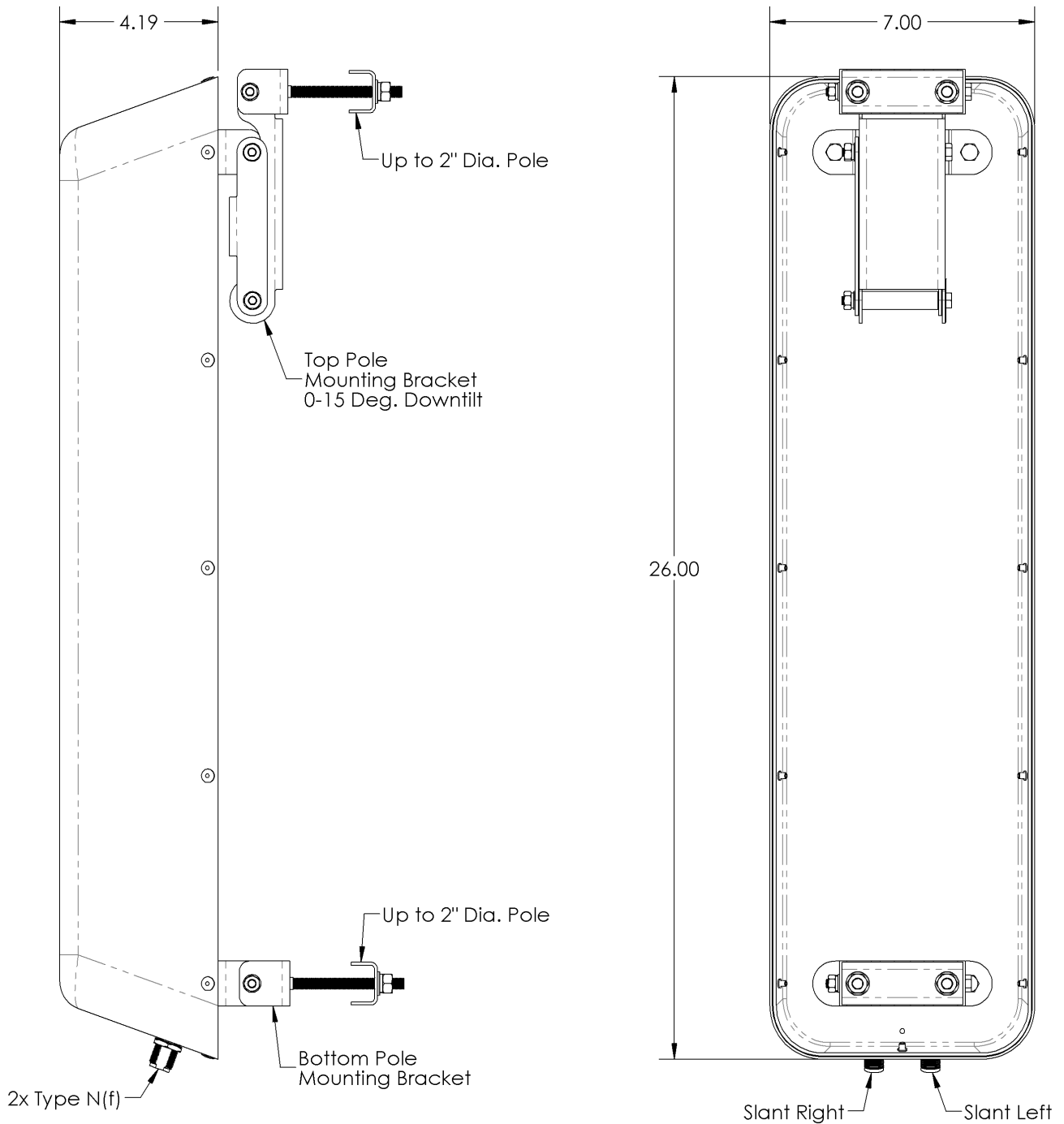
Parameter	Value	Units	Tolerance
Antenna Pattern	Directional Antenna		
Frequency Band	S		
Impedance	50.00		
Minimum Frequency	2.2 / 2,200	GHz / MHz	
Maximum Frequency	2.5 / 2,500	GHz / MHz	
Frequency Bandwidth	0.3 / 300	GHz / MHz	
Maximum Gain	12.00	dBi Minimum Gain Across Band	
Polarization	Slant R/L		
Color	White		
Maximum RF Input Power	50	Watts	Per Port
Horizontal AZ Beamwidth	120	Degrees	Typical Beamwidth Measured Mid Band
Vertical EL Beamwidth	12	Degrees	Typical Beamwidth Measured Mid Band
Radome Material	UV Stable Kydex		
Ground Plane Required	No		
Mount Style	1" to 2" Pole Mounting Kit with 0 to -15° Elevation Downtilt Adjustment		
Maximum Wind Velocity	161	kph	
RF Connector Type	Type-N(f)		
Operating Temperature Range	-40 to +140	F	-40 to +60 C
Product Length	26.00 / 660.40	inches / mm	
Product Width	7.00 / 177.80	inches / mm	



Parameter	Value	Units	Tolerance
Product Height	4.19 / 106.43	inches / mm	
Product Weight	6.6 / 186.5	oz / grams	Including Mounting Hardware



Azimuth (Blue) and Elevation Pattern (Red) for Slant Left/Right Polarized Elements



Engineering Drawing

All dimensions are in inches