

STORMCASTER™-E

Long-Range Zoom Imaging Payload



APPLICATIONS

IMMEDIATE ISR

**CLANDESTINE
OPERATIONS**

TARGETING

**SITUATIONAL
AWARENESS**

EVENT OVERWATCH

FORCE PROTECTION

**ADVANCED TARGET
RECOGNITION**

BORDER SECURITY

**CRITICAL
INFRASTRUCTURE
PROTECTION**



The StormCaster-E is a fully integrated electro-optical camera payload designed for demanding applications that require clear and precise imagery across daylight and low light conditions.

As a member of our next generation payload family, the StormCaster-E represents a significant leap in imaging performance, line of sight stabilization and range of motion – in a rugged low SWaP-C package.

The modularity of the StormCaster payload family facilitates interoperability and rapid interchange of payloads across the SkyRanger R70 and R80D SkyRaider platforms while leveraging continuously evolving aircraft performance, intelligence and set of available accessories.

NEXT GENERATION IMAGING TECHNOLOGY

Improved lens, image sensor and ISP support high image quality across the zoom range.

SUPERIOR LOW LIGHT PERFORMANCE

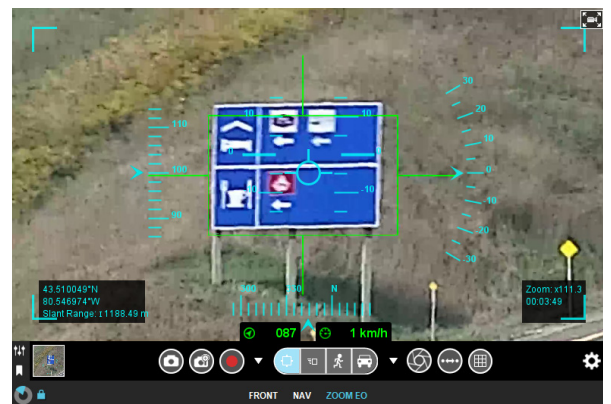
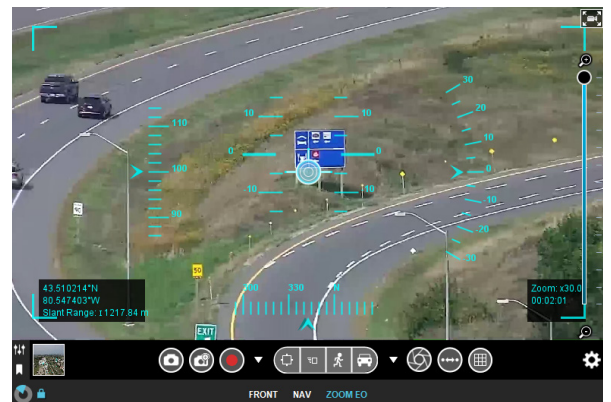
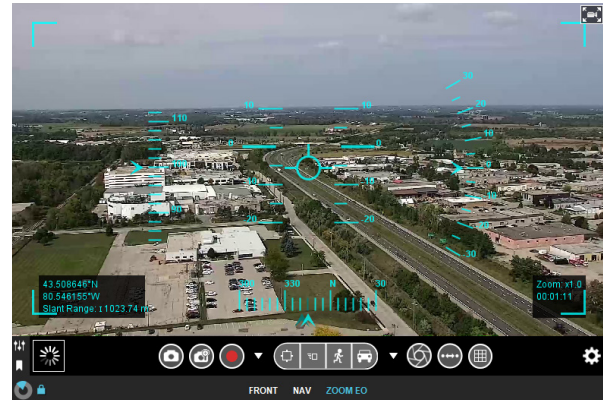
Extends effective operational utility into twilight and backlit nighttime conditions.

ON-BOARD AI PROCESSOR

On-board Xavier NX supports evolution of enhanced image processing thereby offloading and reducing the reliance on aircraft processors.

SPECIFICATIONS

| | |
|--------------------------------------|--|
| Camera | |
| Shutter Type | Mechanical |
| Zoom | 30x Enhanced Optical, 4x Digital |
| Field of View | 58.1° to 2.3° |
| Video Resolution | 1080p/60 |
| Removable Memory | No |
| Line-of-Sight Stabilization | <0.3 mRad |
| Gimbal Stabilization | |
| | 3 axis (pitch/roll/yaw) |
| Controllable Ranges of Motion | |
| Pitch | +20 /-100 degrees |
| Yaw | +/- 180 degrees |
| Environmental Performance | |
| | All weather operations IP-54 compliant |
| Video Metadata | |
| | Embedded STANAG 4609 KLV Metadata |
| Weight | |
| | 1.1kg (2.4 lbs) |
| Dimensions | |
| | 196mm (W) x 140mm (L) x 191mm (H) 7.7" (W) x 5.5" (L) x 7.5" (H) |
| Operating Temperature | |
| | -20°C to +50°C (-4°F to 122°F) |
| Additional System Features | |
| | Geopointing User Defined Object Tracking Moving Target Indication Digital Image Stabilization Target Coordinates, Heading, Speed AI-based People/Vehicle Detection and Classification |



Zoom performance: Comparative imagery across 1x, 30x, 120x zoom range

AMERICAS

1600 Broadway, Suite 2550
Denver, CO 80202

575 Kumpf Dr.
Waterloo, ON N2V 1K3,
Canada

EUROPE

2 Kings Hill Avenue - Kings Hill
West Malling, Kent ME19 4AQ
United Kingdom

MIDDLE EAST

Building No. DLC-FH-03
Dubai World Central
P.O. Box 713153
Dubai, UAE

ASIA

10 Kallang Avenue #09-10,
Aperia Tower 2
Singapore 339510

This product is subject to United States export regulations and may require US authorization prior to export, reexport, or transfer to non-US persons or parties. Diversion contrary to US law is prohibited. For assistance with confirming the Jurisdiction & Classification of Teledyne FLIR, LLC products, please contact exportquestions@flir.com. ©2022 Teledyne FLIR LLC. All rights reserved.

Revised on 09/27/22
StormCaster-E_Datasheet-LTR 22-0927