

# STORMCASTER-T

Continuous zoom LWIR imaging

## APPLICATIONS

**IMMEDIATE ISR**

**CLANDESTINE  
OPERATIONS**

**TARGETING**

**SITUATIONAL  
AWARENESS**

**EVENT OVERWATCH**

**FORCE PROTECTION**

**ADVANCED TARGET  
RECOGNITION**

**BORDER SECURITY**

**CRITICAL  
INFRASTRUCTURE  
PROTECTION**



The StormCaster-T continuous zoom LWIR payload supports detection, recognition, identification and target acquisition day or night, with maximum range and time on station. Its continuous zoom lens permits long distance ISR while providing sharp, clear actionable imagery in support of the mission.

As a member of our next generation payload family, the StormCaster-T reflects a significant leap ahead in scalable payload performance offering a 7x improvement in line of sight stabilization, enhanced range of motion and a dramatically increased geolocation accuracy - all in a rugged, low SWaP-C package.

The modularity of the StormCaster payload family facilitates interoperability and rapid interchange of payloads across SkyRanger R70 and R80D SkyRaider platforms while leveraging continuously evolving aircraft performance, intelligence and set of available accessories.

## FEATURES

### CONTINUOUS ZOOM IR AND SUPERIOR STABILIZATION PERFORMANCE

Industry leading detection, recognition and identification ranges.

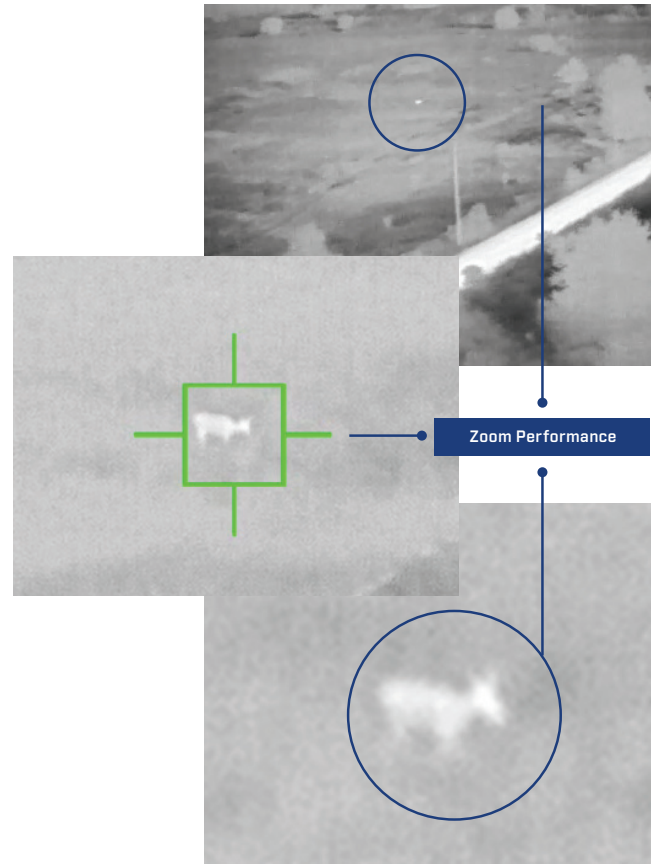
### RICH AND EXPANDING FEATURE SET

With multiple embedded NVIDIA TX2 processors, the R70/R80D is a flying supercomputer with an engine for real-time AI at the network edge, including object detection and classification and support for AI development with third-party vendors.



## SPECIFICATIONS

<b>Thermal Imager</b>	
Sensor	Boson, 12µm, 30Hz/9Hz
Resolution	640 x 512
Fields of View	31° to 6° optical continuous zoom 2° with digital zoom
<b>Gimbal</b>	
Line-of-sight Stabilization	< 0.3 mRad
Stabilization	3 axis (pitch, roll, yaw)
Vibration Isolation	6 axis passive on aircraft
<b>Controllable Ranges of Motion</b>	
Pitch	+20/-90 degrees
Yaw	+/- 180 degrees
<b>Slew Rate</b>	
	60 deg/s
<b>Weight</b>	
	1.0 Kg (2.2 lbs)
<b>Dimensions</b>	
	196mm (W) x 159 (L) x 223mm (H) 7.7" (W) x 6.2" (L) x 8.7" (H)
<b>Operating Temperature</b>	
	-20° C to 45° C (-4° F to 113° F)
<b>Additional System Features</b>	
	Geo-pointing User Defined Object Tracking Moving Target Indication Digital Image Stabilization Target Coordinates, Heading, Speed AI-based People/Vehicle Detection & Classification (Q2 2020)



**Zoom Performance:**  
Comparative Imagery for  
15mm to 75mm continuous zoom

### AMERICAS

1600 Broadway, Suite 2550  
Denver, CO 80202

575 Kumpf Dr.  
Waterloo, ON N2V 1K3,  
Canada

### EUROPE

2 Kings Hill Avenue - Kings Hill  
West Malling, Kent ME19 4AQ  
United Kingdom

### MIDDLE EAST

Building No. DLC-FH-03  
Dubai World Central  
P.O. Box 713153  
Dubai, UAE

### ASIA

10 Kallang Avenue #09-10,  
Aperia Tower 2  
Singapore 339510

This product is subject to United States export regulations and may require US authorization prior to export, reexport, or transfer to non-US persons or parties. Diversion contrary to US law is prohibited. For assistance with confirming the Jurisdiction & Classification of Teledyne FLIR, LLC products, please contact [exportquestions@flir.com](mailto:exportquestions@flir.com). ©2022 Teledyne FLIR LLC. All rights reserved.

Revised on 11/04/22  
StormCaster-T\_Datasheet-A4 22-1104