

Firmware upgrade procedure.

Step 1: Connect to the IMU board (APX15/APX20/AP+50)

With the provided ethernet cable:

- Connect LiDAR to PC
- Switch LiDAR ON
- Set PC to static IP address
 - Click on "Change adapter settings" in Control Panel/Network and internet/Network and sharing
 - Right click on the ethernet adapter and go to "Properties"
 - In the Adapter properties select
 - "Internet Protocol version 4 (TCP/IPv4)" and click "Properties"
 - Make sure the Protocol window uses the IP 192.168.9.101 and the default subnet mask (255.255.255.0)
- Click OK and close
- Connect to the APX15
 - Open a web browser and enter the IP address 192.168.9.253
 - Enter the login – "admin" and password – "password"

Contact

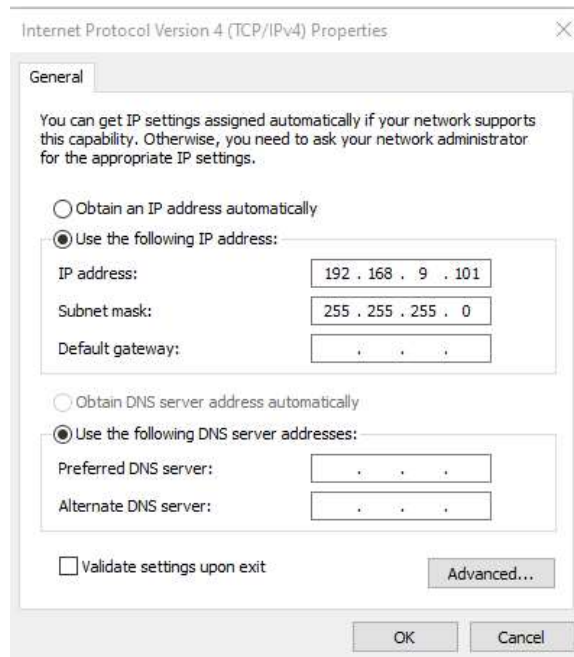
contact@yellowscan.com
+33 411 931 400
www.yellowscan.com

Address

525 Avenue Saint-Sauveur du Pin
34980 Saint-Clément-De-Rivière
France

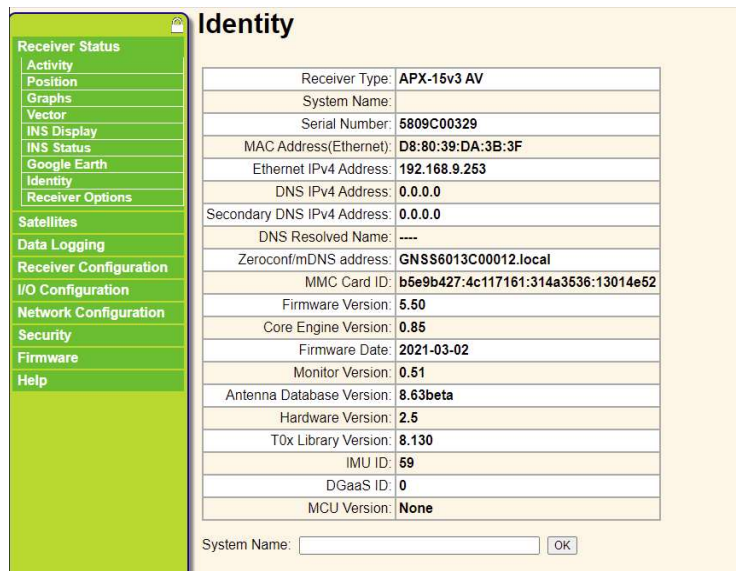
Company

SAS au capital de 157 342 €
SIRET: 813 091 543 00021
TVA : FR24813091543



Step 2: Backup your configurations and lever arms

Record the old firmware version by taking a screenshot of the "Identity" page in the Receiver status tab.



Contact

contact@yellowscan.com
+33 411 931 400
www.yellowscan.com

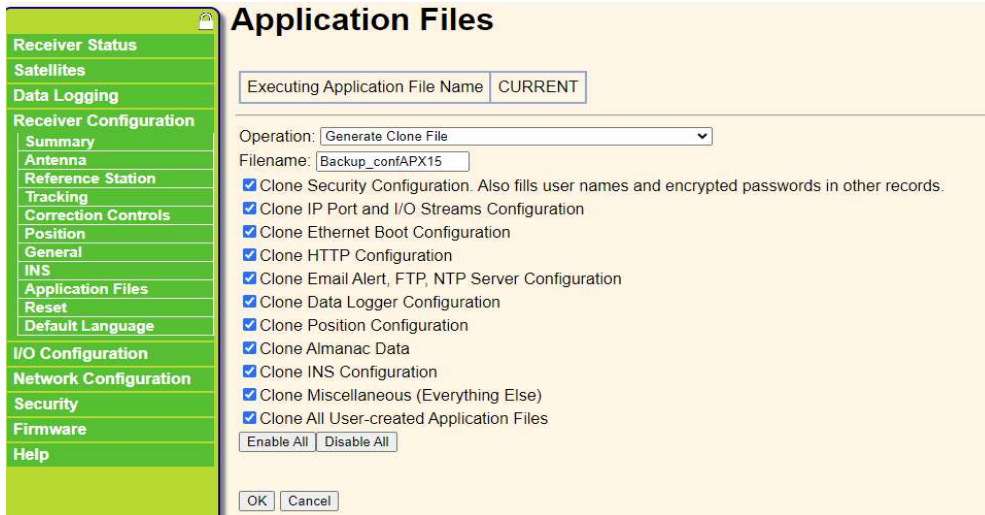
Address

525 Avenue Saint-Sauveur du Pin
34980 Saint-Clément-De-Rivière
France

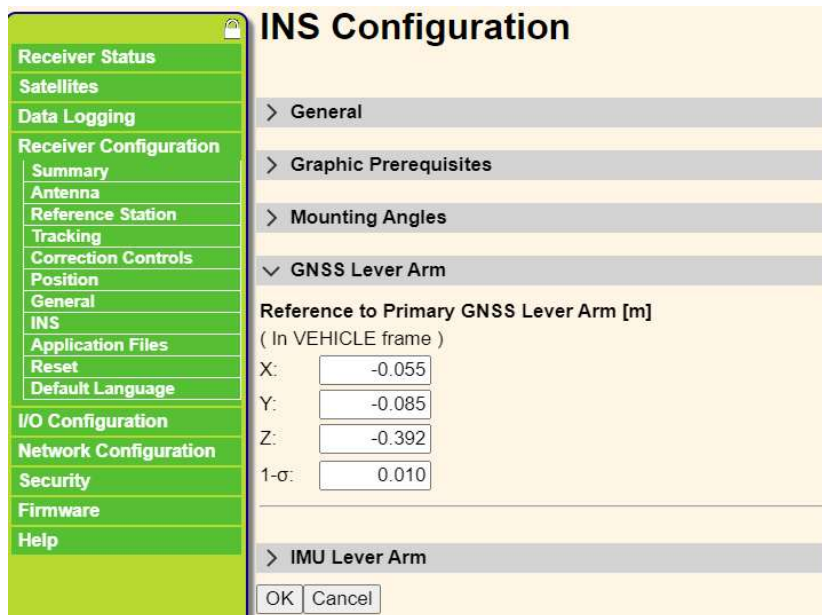
Company

SAS au capital de 157 342 €
SIRET: 813 091 543 00021
TVA : FR24813091543

The backup shouldn't be used in the future, it's only for rollback to previous firmware version, in case of incompatibility of firmware with the APX15 board.



The measure of the lever arms is also just a precaution, as they couldn't be retrieved. But they should be kept during the firmware update procedure.



Contact

contact@yellowscan.com
 +33 411 931 400
 www.yellowscan.com

Address

525 Avenue Saint-Sauveur du Pin
 34980 Saint-Clément-De-Rivière
 France

Company

SAS au capital de 157 342 €
 SIRET: 813 091 543 00021
 TVA : FR24813091543

In case of remote IMU (APX20, APX30, AP+50), think about keeping your remote IMU lever arms too:

Download your configuration file.

WARNING! Please note that you might have several configurations to save! (Especially for Fly & Drive users)

Contact

contact@yellowscan.com
+33 411 931 400
www.yellowscan.com

Address

525 Avenue Saint-Sauveur du Pin
34980 Saint-Clément-De-Rivière
France

Company

SAS au capital de 157 342 €
SIRET: 813 091 543 00021
TVA : FR24813091543

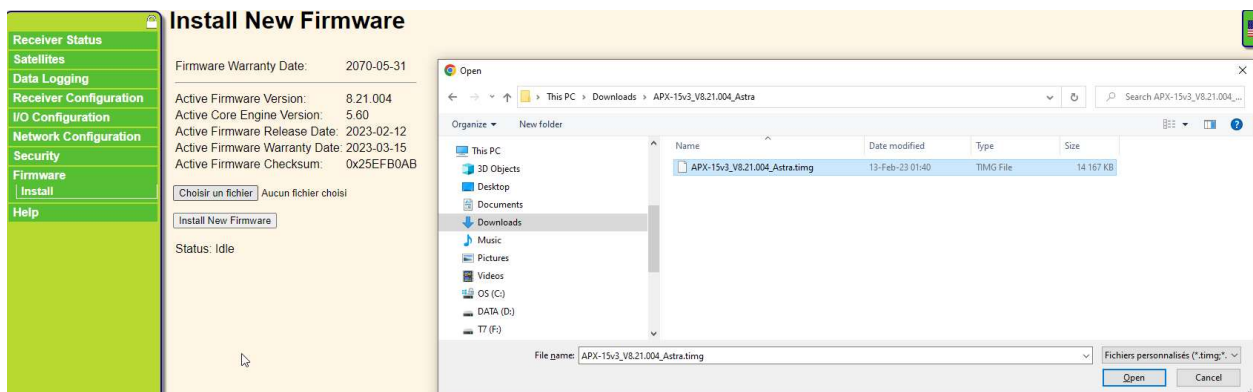
Step 3: Download the new firmware

The new firmware is version 8.21. Unzip it locally on your computer. Download it [here](#).

Step 4: Proceed to the firmware upgrade

Make sure the battery of your unit is fully charged, or that you are powered by a long-lasting external power source.

An interruption halfway during the firmware update could mean a return for repair to YellowScan facilities! Go to Firmware / Install. Click on "Choose a file" and browse to the place where you unzipped the .timg file.



Let it proceed till the end, and restart when suggested.

Contact

contact@yellowscan.com
+33 411 931 400
www.yellowscan.com

Address

525 Avenue Saint-Sauveur du Pin
34980 Saint-Clément-De-Rivière
France

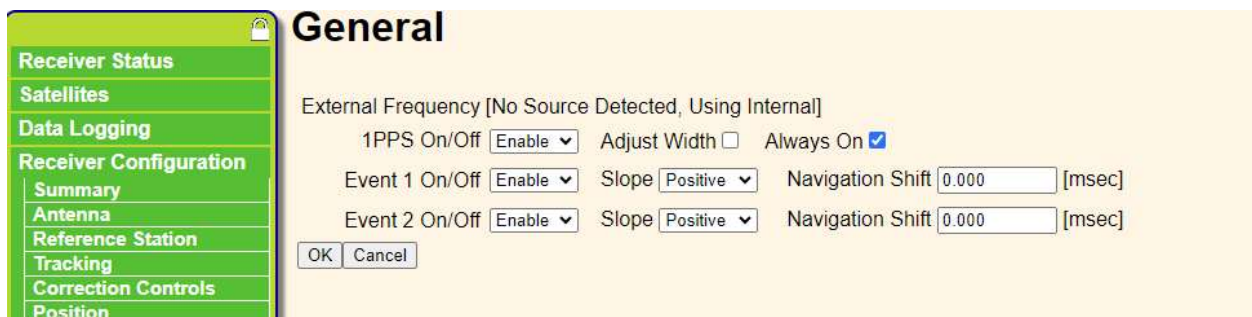
Company

SAS au capital de 157 342 €
SIRET: 813 091 543 00021
TVA : FR24813091543

Step 5: Re-activate the PPS signals

Go to Receiver Configuration / General, and copy these parameters:

APX15/20:



The screenshot shows the 'General' configuration page for PPS signals. On the left is a green sidebar menu with the following items: Receiver Status, Satellites, Data Logging, Receiver Configuration (selected), Summary, Antenna, Reference Station, Tracking, Correction Controls, and Position. The main content area is titled 'General' and contains the following settings:

- External Frequency [No Source Detected, Using Internal]
- 1PPS On/Off: Enable Adjust Width Always On
- Event 1 On/Off: Enable Slope: Navigation Shift: [msec]
- Event 2 On/Off: Enable Slope: Navigation Shift: [msec]

At the bottom of the configuration area are 'OK' and 'Cancel' buttons.

Check that the lever arms have your previous values.

If you have any question, don't hesitate to contact us: support@yellowscan.com

Contact

contact@yellowscan.com
+33 411 931 400
www.yellowscan.com

Address

525 Avenue Saint-Sauveur du Pin
34980 Saint-Clément-De-Rivière
France

Company

SAS au capital de 157 342 €
SIRET: 813 091 543 00021
TVA : FR24813091543