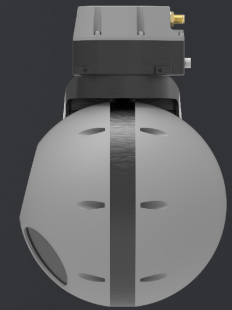


eOPIC-5

THREOD
SYSTEMS



Imaging payload

- 2-axis gyro stabilized gimbal
- Excellent image quality
- Outstanding accuracy
- Day and night imaging
- Moving map software
- Call for fire and adjustment

Full HD TV sensor

- 30X optical, 3X digital zoom
- Resolution 1920x1080
- HFOV 63.7° - 2.3°
- DRI: 14/6/2.5 km human
- 22/12/6 km vehicle
- NIR low light mode

LWIR thermal sensor

- 8X digital zoom
- Resolution 640x512
- HFOV 18°
- DRI: 1280/320/160 m human
- 3850/950/295 m vehicle

Video

- 1920x1080p 30 fps
- H.264/H.265 encoding
- Ethernet MPEG-TS output
- High quality on-board recording
- STANAG 4609 KLV metadata
- Unicast/multicast streaming

Features

- Moving target tracking
- Scene tracking
- Geo-pointing
- Picture-in-Picture
- On-board DEM
- Integrated INS/GPS



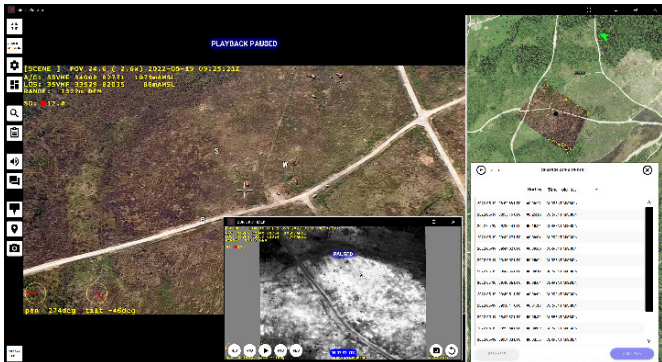
Measure distances and bearing directly on the video, visualize sensor coverage history on map



Picture-in-picture



30X optical zoom FullHD TV camera



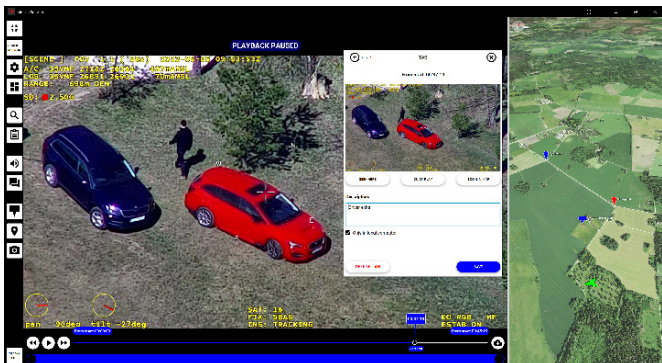
Search archived footage for specified coordinates and view results side-by-side with live mission



Display the full resolution video on map in real-time



TV camera in near infrared (NIR) mode for low light mode



Create searchable bookmark tags to organize archived and live footage



Track moving targets



LWIR thermal camera

CONTACT:

Website www.threod.com
Email sales@threod.com